

ANNUAL RURAL HEALTH CONFERENCE

OCTOBER 19-21, 2022
COLORADO SPRINGS, CO
COLORADO RURAL HEALTH CENTER

Sponsor and Exhibitor Prospectus

Now with
more exhibit
time!

72%
OF ATTENDEES
ARE C-SUITE/
MANAGEMENT



Event Details

EVENT OVERVIEW

Join us in Colorado Springs for the Annual Colorado Rural Health Conference! This annual conference offers networking, education on a wide range of topics, resources, and many opportunities to interact with C-Level Executives, Directors, Managers, Consultants, and other important staff in rural healthcare with an emphasis on the state's critical access hospitals.

The Annual Rural Health Conference is the year's premier event for networking with representatives from Colorado's rural hospitals. Sponsorship and exhibitor opportunities are limited in availability, so act now!

SPONSOR PACKAGES TO FIT YOUR NEEDS

Our sponsor and exhibitor packages are meant to give you the flexibility to meet your goals. We offer assorted levels of exposure and promotion to meet your specific needs. Don't see what you're looking for? Give us a call. We want your involvement in the state's premier rural healthcare conference to pay dividends!

ABOUT THE COLORADO RURAL HEALTH CENTER

The Colorado Rural Health Center (CRHC) is Colorado's nonprofit State Office of Rural Health. CRHC works with Federal, state and local partners to offer services and resources to rural healthcare providers, facilities and communities. We have a diverse and inclusive statewide constituency of over 3,500 people and organizations.

Established in 1991 by members of the Colorado Rural Health Consortium, Colorado Rural Health Center (CRHC) was created with start-up support from the Federal Office of Rural Health Policy and several other public and private organizations around the state. CRHC was developed as a nonprofit organization and is one of only three nonprofit offices of rural health in the country.

CONFERENCE VENUE

The Antlers Hotel Colorado Springs
4 S Cascade Ave,
Colorado Springs, CO 80903

<https://antlers.com/>

CRHC CONTACTS

Kinsey Sarian
ksarian@coruralhealth.org
Event Coordinator
720-788-8082



The State Office of Rural Health

TARGET AUDIENCE

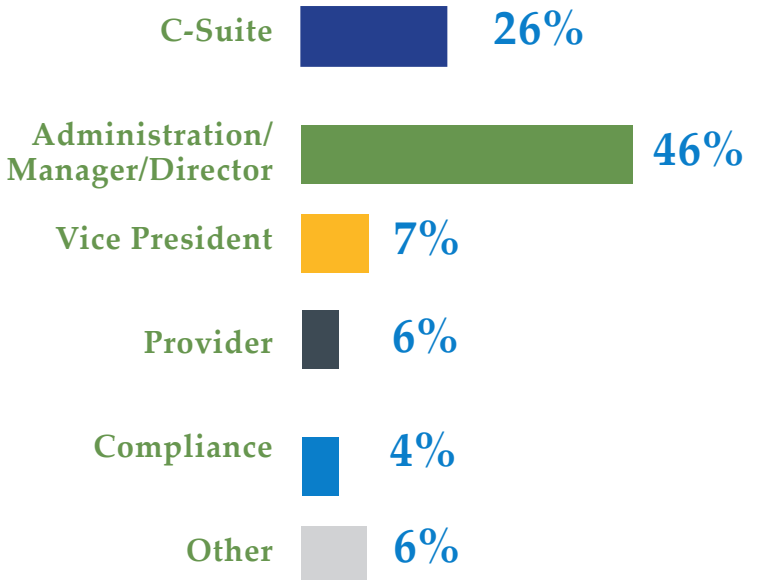
The Annual Rural Health Conference is Colorado Rural Health Center's fall conference. The audience is primarily made up of hospital leadership, management, administrative staff, and quality improvement teams. We feature a full day of hands-on workshops, as well as general sessions and breakout sessions, for two and a half days packed with learning and networking. Engage these healthcare professionals with unopposed exhibit time, networking meals, and the option to sponsor breakout sessions.

WHY BE A PART OF THIS EVENT?

The Annual Rural Health Conference is a well-established, essential event for members of Colorado's safety net. Attendees are motivated to engage, learn, and make the most of their time networking with peers and vendors alike.

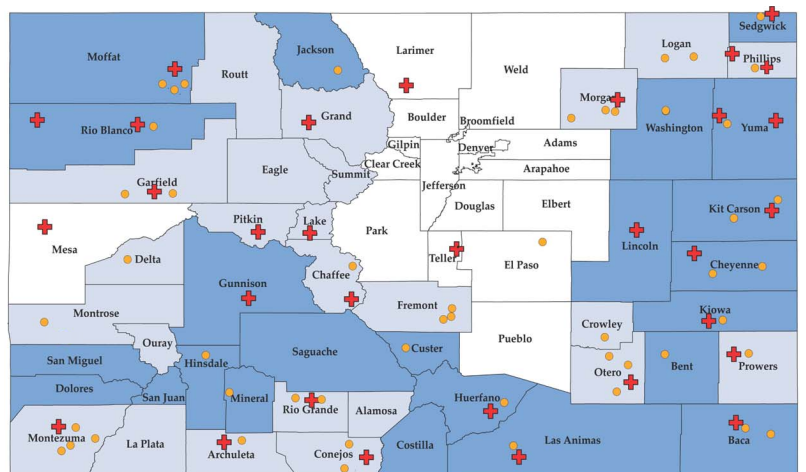
Conference exhibitors are an essential component to the conference, as they connect our attendees with valuable resources and information that is applicable to their hospitals, clinics, staff and more.

ATTENDEE POSITION BREAKDOWN (for past in-person Annual Conferences)



WHERE ARE OUR MEMBER FACILITIES?

The Colorado Rural Health Center serves rural facilities of all types across the state. Our members are primarily rural health clinics (RHCs) and Critical Access Hospitals from the rural and frontier counties of Colorado.



BOOTH OPPORTUNITIES

Booth locations and event timelines are approximate and subject to change

TENTATIVE EXHIBITOR AND SPONSOR SCHEDULE

TUESDAY - October 18

6:00 - 9:00 PM Set Up

WEDNESDAY - October 19

6:00 - 7:00 AM Set Up
7:00 - 8:00 AM Breakfast
9:30 - 10:00 AM Morning Break and Visit with Exhibitors
12:00 PM Lunch
1:00 - 1:30 PM Afternoon Break and Visit with Exhibitors

THURSDAY - October 20

7:00 - 8:00 AM Breakfast
9:30 - 10:00 AM Morning Break and Visit with Exhibitors
12:00 PM Lunch
1:00 - 1:30 PM Afternoon Break and Visit with Exhibitors
6:00 PM Evening Networking Event (Sponsorship Opportunity)
9:00 PM Tear down



Sign up today!
[coruralhealth.org/ events/annual-conference](http://coruralhealth.org/events/annual-conference)



**PREMIUM
EXHIBITOR**
\$1,450

- All regular exhibitor benefits
- Enhanced exposure exhibit table
- Logo on conference signage
- Ability to choose your booth location (first come, first served)
- 1 Additional registration included



EXHIBITOR
\$1,050

- 1 Full conference registration
- exhibit table (6')
- Logo included on event page and mobile app
- Breakfast and lunch
- Networking with attendees



Sponsor Levels



GOLD SPONSOR

\$5,500

- All Silver Sponsor Benefits
- Option to reserve general session table for staff
- Option to introduce Keynote Speaker
- Pre and Post Conference Promotion:
- Name & logo on conference signage & event slideshows
- Verbal recognition from CRHC's CEO
- Name, logo description in two issues of CRHC's E-Newsletter



SILVER SPONSOR

\$3,650

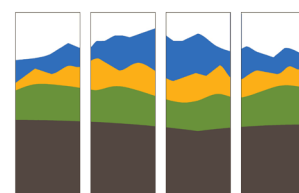
- All Bronze Sponsor Benefits
- Option to introduce general session speaker
- Host a Conference Session Room
- Logo on Conference Agenda
- Discount to Guests of Sponsor
- Post Conference Promotion: Name, logo and company description in one issue of CRHC's e-newsletter



BRONZE SPONSOR

\$2,750

- 2 Event registrations
- Logo included on Event Page and Mobile App
- Breakfast and lunch
- Enhanced Exposure Table
- Logo on Conference Signage and event PowerPoint
- Option to hang banner behind table
- Verbal recognition from CEO during Welcome Address
- Access to attendee list with attendee names (unless attendees opt out)



A LA CARTE SPONSORSHIP OPPORTUNITIES

Can't commit to a sponsorship level above? We have piece-by-piece sponsorship opportunities to meet every need. For questions on sponsoring a la carte, please contact Kinsey at 720-788-8082



**Thursday Night
Happy Hour**
\$3,500



Wi-Fi
\$700



**Conference
Room**
\$750-\$1,000



**Mobile App
Sponsor**
\$1,500



**Pre-Conference
Social Media
Campaign**
\$300



**Folder in
Registration
Bag**
\$300 + cost



**Coffee Break
Sponsor**
\$500 + cup cost



**Promo Video
Showing**
\$700



**App Push
Notification**
\$200



**Attendee
Lanyards**
\$500 + cost



**Tote Bag
Inserts**
\$200

Visit our website for even more options!
[coruralhealth.org/ events/annual-conference](http://coruralhealth.org/events/annual-conference)

