

COMMUNITY IMPACT

- Custer County Clinic -

COUNTY PROFILE



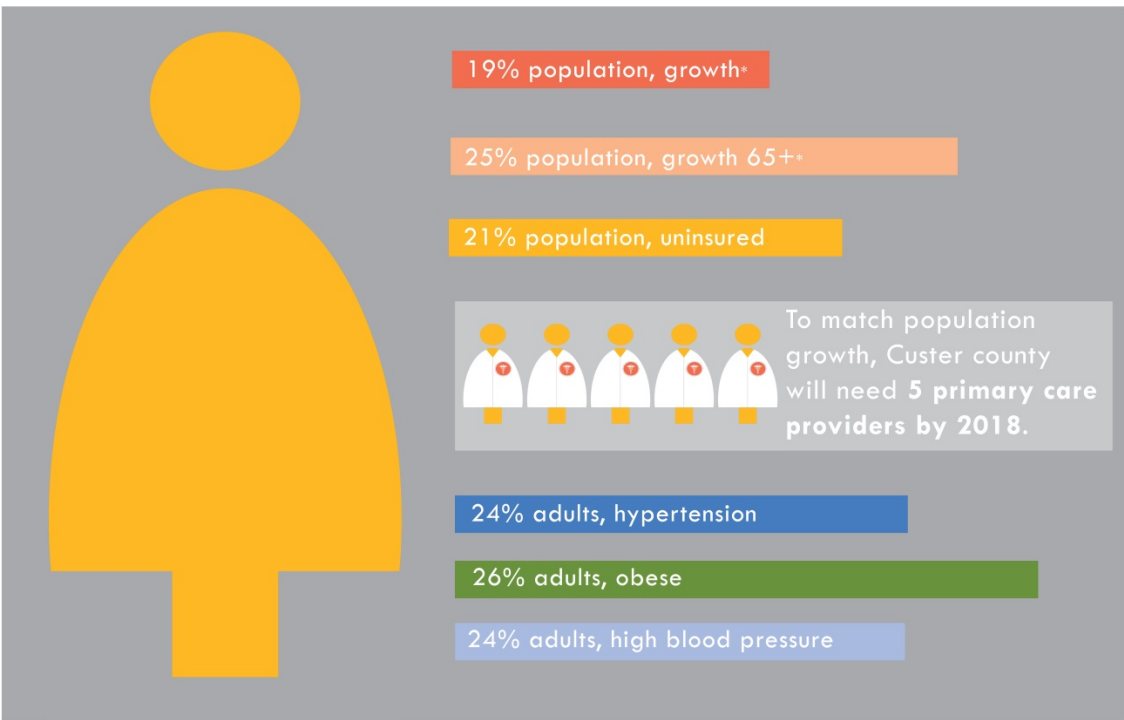
Custer County clinic is the only healthcare facility in the county



Closest clinic is 45 minutes away in Florence



Custer county population 4,400



HOW DOES THE CLINIC SUPPORT THE COMMUNITY?

Clinic Family Practice

Clinic urgent care walk-ins

Digital X-ray

Emergency Medical Services

Gastroenterology



Lab services

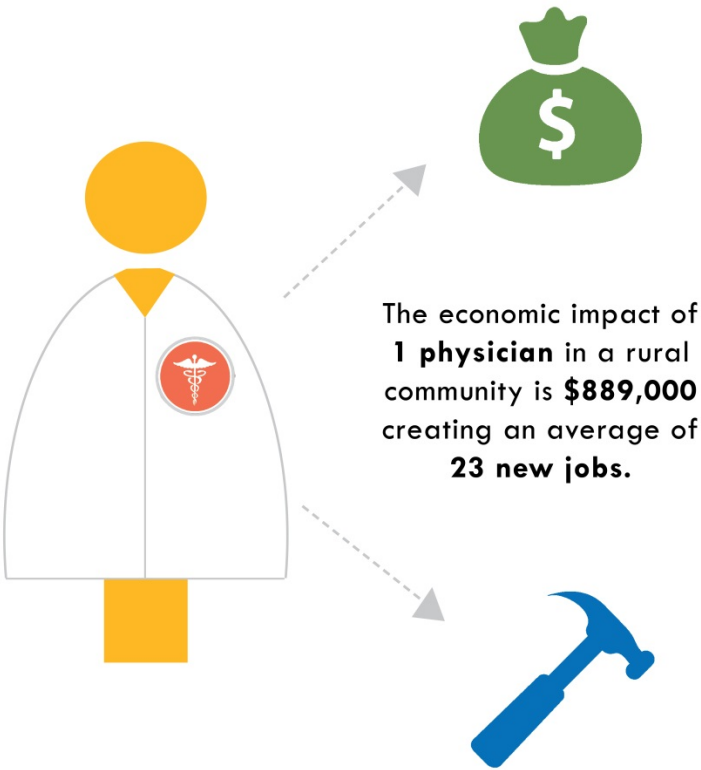
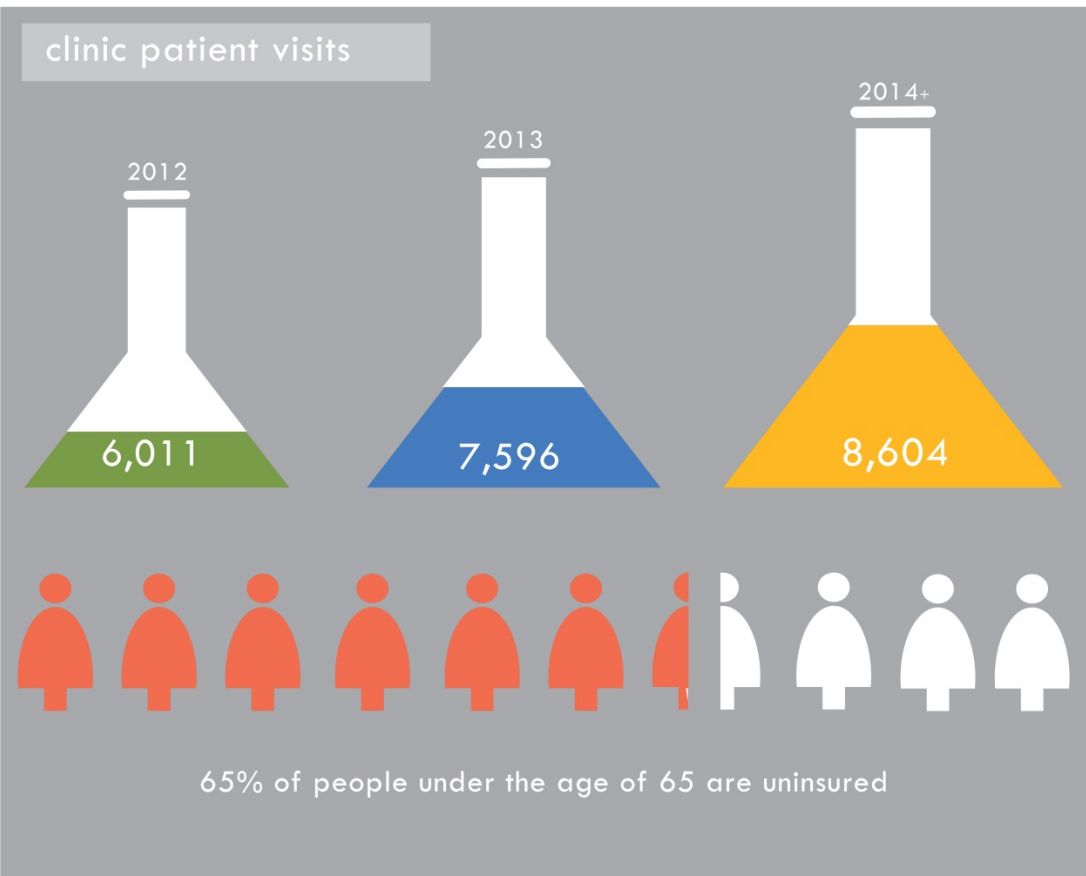
Optometry

Orthopedics

Physical Therapy

Rocky Mountain Sleep Resources

WHO DOES THE CLINIC SEE?



* 2018
** 2013
+ Estimate based on Jan.-Jun. 2014 data