

Mark your calendars! Rural Connectivity User Group

Thank you to those who took the time to attend our February User Group. CCMCN and CRHC will continue to host quarterly user group meetings, with the next meeting on **Tuesday, May 14th, 10am - 11am MST.**

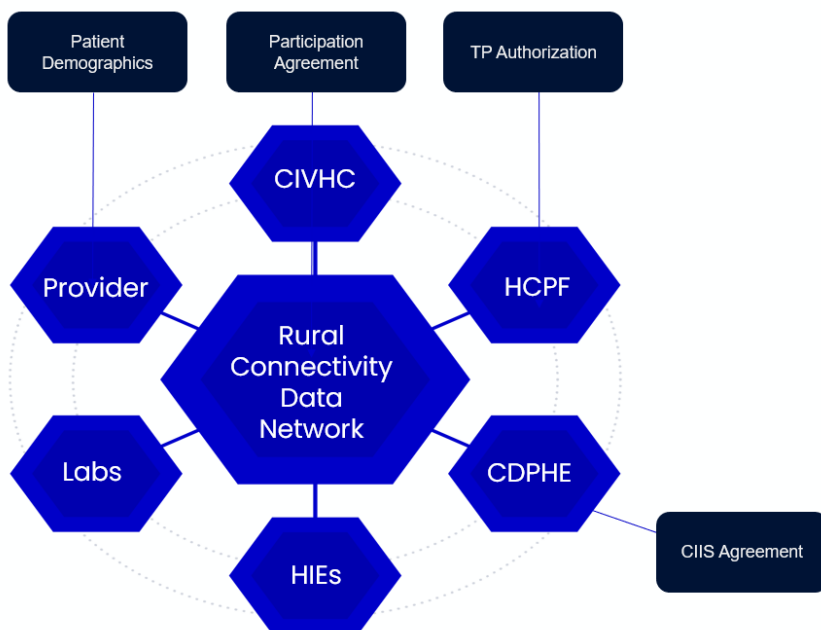
The objectives of these meetings are to:

- ✓ Increase awareness of the Community Analytics Platform (CAP) and available reports
- ✓ Collaborate on new reporting ideas
- ✓ Increase utilization and comprehension of the CAP
- ✓ Gather feedback from users for enhancements to the platform
- ✓ Understand how organizations are using the CAP

Join us for our next Rural Connectivity User Group!

[Register Now](#)

Data Sources Updates



Claims Data

Administrative billing claims through Q3 of 2023 are expected in the CAP by 5/1/2024.

HIE Laboratory Data

QHN lab data has now been ingested and is incorporated as a data source throughout the Community Analytics Platform. This will provide improved capture of laboratory results for organizations on the western slope.

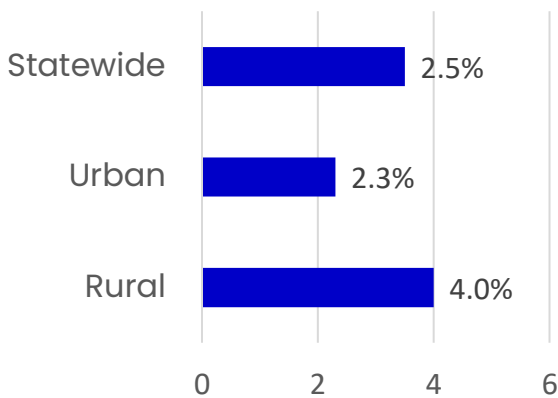
Chronic Disease Management - Cardiovascular

“Heart disease is the leading cause of death for men, women, and people of most racial and ethnic groups in the United States.”¹

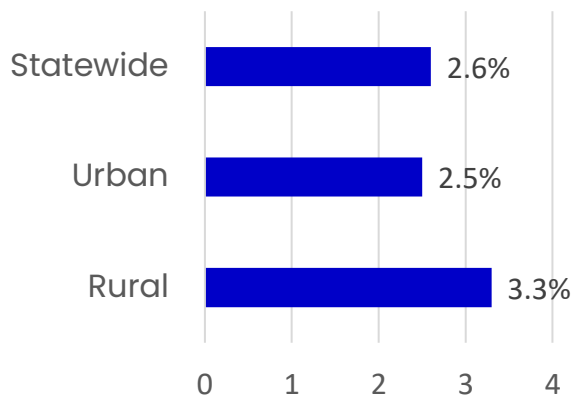
1 individual dies every **36** seconds from Cardiovascular Disease in the US

The rural population is more likely to engage in risky health-related behaviors and to experience higher rates of chronic conditions and activity limitations.¹

Heart Disease



Heart Attack



The new CVD Screening and Diagnoses report provides users CVD-related metrics on members of their patient population who have:

CVD Risk Factors

Preventative Screenings or Participated in Prevention Programs

CVD Outcomes

CVD Interventions

CVD Related Death

The report also includes socio-demographic information, an ADT summary view, and patient lists for outreach and care coordination follow-up.

1. "Chronic Disease State Plan", CDPHE. Accessed 20 March 2024. <https://drive.google.com/file/d/1w4vf0zG5_oPocsM3AIY56EZe379ZJe8g/view>

2. "Rural Health Snapshot, CRHC. Accessed 20 March 2024. <https://corurahealth.org/wp-content/uploads/2013/10/CRHC_Snapshot-2024-DIGITAL.pdf>

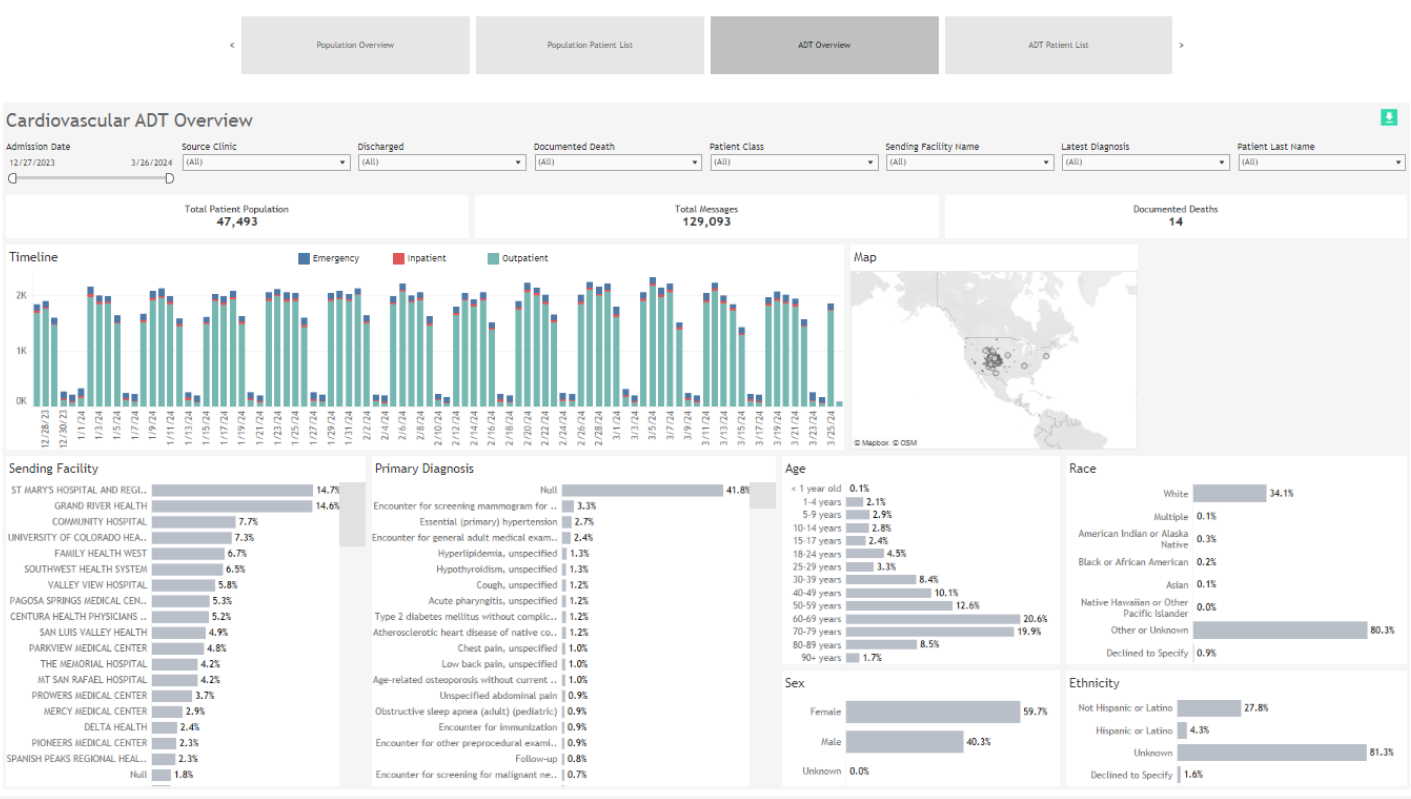


Cardiovascular Disease Screenings and Diagnoses Report

Patient Overview – showcases patient population by risk factors, prevention, interventions, outcomes, and CVD related mortality



ADT Overview – showcases ADT messages over 90 days for members with a CVD risk factor, outcome, medication, or intervention



The Cardiovascular Disease Screenings and Diagnoses report will be available April 2024

Rural Connectivity Project News and Updates

R7 Payments

Another round of Sustainability Payments; \$100,000 per Critical Access Hospital and \$20,000 per Rural Health Center, will be issued on August 1, 2024, and each subsequent year on August 1st annually for all qualified rural providers participating in the state's Rural Connectivity Program.

At a minimum, to qualify for this payment or partial payment, a participating rural provider must be connected to one of the state's Health Information Exchanges (HIEs) and the Community Analytics Platform (CAP) established by the Office of eHealth Innovation.

- The participating rural provider has a signed agreement with one of the Colorado Health Information Exchanges (HIEs) so the participating rural provider can view medical records contained within the HIE.
- The participating rural provider has a signed participation agreement (PA) with the vendor (CCMCN) managing the Community Analytics Platform (CAP) so that the participating rural provider is accessing the CAP and authorizing the vendor managing the CAP to capture data on their behalf. To be eligible for the sustainability payment, organizations must complete a participation agreement by **7/15/2024**.

To continue receiving the full amount each year, providers will make continuous efforts to maintain or increase their level of connectivity between the provider and one of the state's HIEs and the CAP.

Please contact James Stephenson, js@coruralhealth.org with any questions

Current Participation Rural Health Clinics



69%

of RHCs are contracted to participate in the Community Analytics Platform



56%

of RHCs have uploaded Demographics to the Community Analytics Platform



31%

of RHCs have completed TP Authorization



58%

of RHCs have completed a CIIS agreement

Critical Access Hospitals



75%

of CAHs are contracted to participate in the Community Analytics Platform



69%

of CAHs have uploaded Demographics to the Community Analytics Platform



28%

of CAHs have completed TP Authorization



50%

of CAHs have completed a CIIS agreement

***Participation rates are as of 3/20/2024**

Community Analytics Platform Changes

CCMCN has transitioned to a new and improved analytics platform. All reports originally developed by CCMCN are accessible to CAP users and can be found at cap.colorado.community. Additionally, CCMCN will collaborate with a new analytics vendor to provide CAP users with access to dynamic, claims-driven reporting. Stay tuned for further details in upcoming user group meetings or newsletters, where updates on the rollout of new reporting functionality will be shared. If you have any questions about the new vendor or need to receive login information and instructions, please contact Andy Woster at andy@ccmcn.com.

[LOG IN NOW](#)

Rural Health Today

Recent publications that contain rural health research & policy:

-  [Prevent or Treat: Availability of Diabetes Self-Management Education and Dialysis in High Need Rural Counties](#)
-  [Racial/Ethnic Differences in Experiences of Intimate Partner Violence and Postpartum Abuse Screening Among Rural US Residents who Gave Birth 2016-2020](#)
-  [Nursing Home Closures and Access to Post-Acute Care and Long-Term Care Services in Rural Areas](#)
-  [Use of the Area Deprivation Index and Rural Applications in the Peer-Reviewed Literature](#)

Technical Assistance or Demo

If you are interested in receiving an in-depth demonstration of the CAP and all it has to offer or if you need technical assistance, please contact Cyntia De Carvalho at cdecarvalho@coruralhealth.org or Sarah Switala at sswitala@coruralhealth.org

Topics of Interest

Are you interested in learning more about a topic that has not yet been covered in the quarterly newsletter or CAP user group meeting? Submit any questions or topics to Demetria Flowers at demetria@ccmcn.com

Demographic Files & Trading Partner Authorization

Want to view data for your organization in the CAP? To begin participating in the Rural Connectivity Project, please reach out to James Stephenson at js@coruralhealth.org or Jessica Whiting at jessica.whiting@ccmcn.com

Next Rural Connectivity Quarterly Newsletter: July 2024