



70%



of RHCs are participating  
in the Community  
Analytics Platform



81%



of CAHs are participating  
in the Community  
Analytics Platform

### Mark your calendars! Rural Connectivity User Group

Thank you to those who took the time to attend our August User Group. CCMCN and CRHC will continue to host quarterly user group meetings, with the next meeting on **Tuesday, November 14<sup>th</sup>, 10am - 11am MST.**

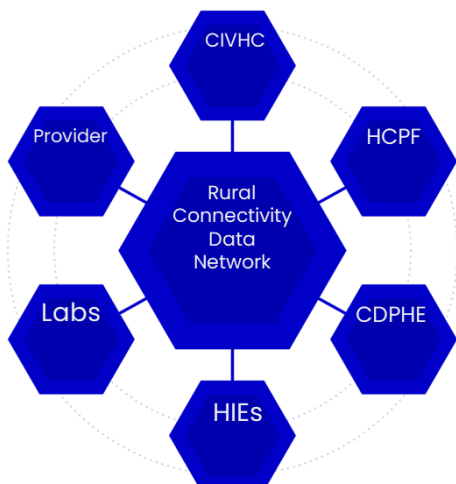
The objectives of these meetings will be to:

- ✓ Increase awareness of the Community Analytics Platform (CAP) and available reports
- ✓ Collaborate on new reporting ideas
- ✓ Increase utilization and comprehension of the CAP
- ✓ Gather feedback from users for enhancements to the platform
- ✓ Understand how organizations are using the CAP

Join us for our next Rural Connectivity User Group!

[Click here to join the meeting](#)

### Data Sources Updates



#### Claims

The CAP now has administrative billing claims through Q1 of 2023. Claims through the end of Q2 2023 will be updated within the platform on 10/20/2023.

**This data will be reflected in Custom Reports only.**

#### Colorado Immunization Information System (CIIS)

CCMCN is now receiving data for all immunizations for those who have completed a CIIS agreement.

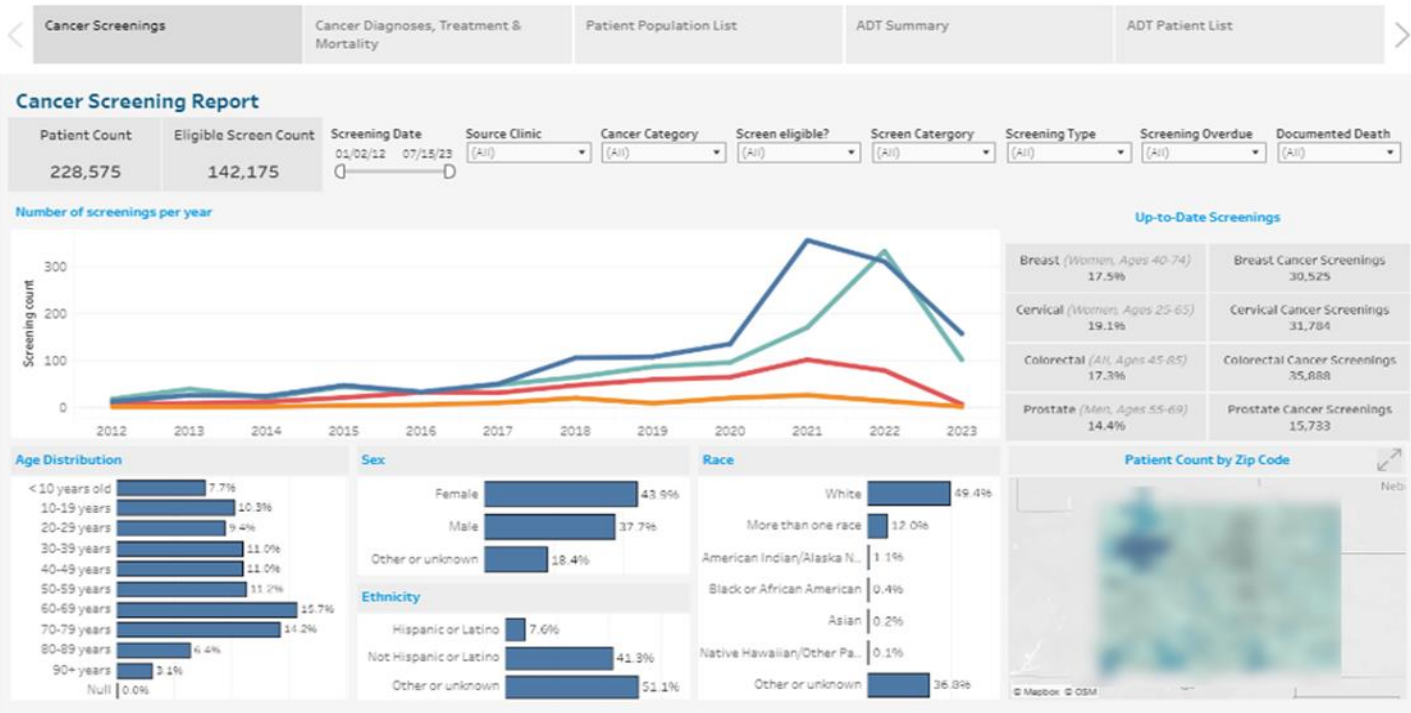


# NEW REPORTS

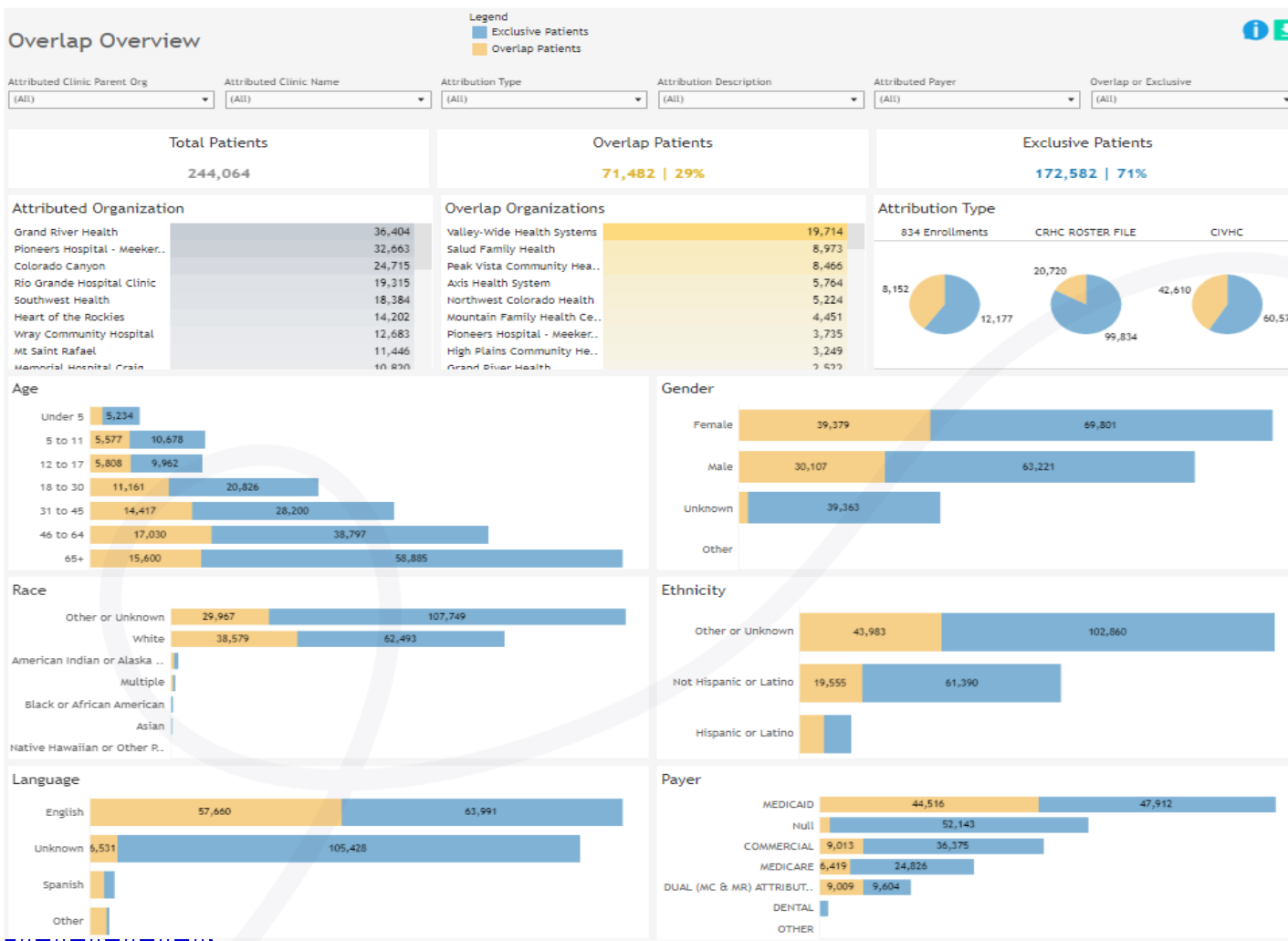
CCMCN strives to continuously create new reports that are beneficial to end users. Don't forget to log into the CAP and check out the recently added reports below.

[LOG IN NOW](#)

## Cancer Report



## Overlap Report



# Community Analytics Platform – Outmigration

A 2020 analysis found that more than **three-in-four** or **76%** of patients living in rural counties with a local hospital outmigrated for care with the most common service lines being General Medicine, Orthopedics, and General Surgery. Patient Outmigration plays a crucial role in the closure of Rural Health Hospitals as it can be a contributor to low financial reserves and inadequate revenues to cover expenses<sup>1,2</sup>

**25%**

of U.S rural hospitals were at high risk of closing based on an analysis of financial viability<sup>1</sup>

**14%**

of Colorado rural hospitals were at high risk of closing based on an analysis of financial viability<sup>1</sup>

## What are potential reasons for outmigration?

✓ **Distance or Transportation**

✓ **Service Limitations**

✓ **Cost**

✓ **Patient Experience**

✓ **Privacy**

✓ **Staff Retention**

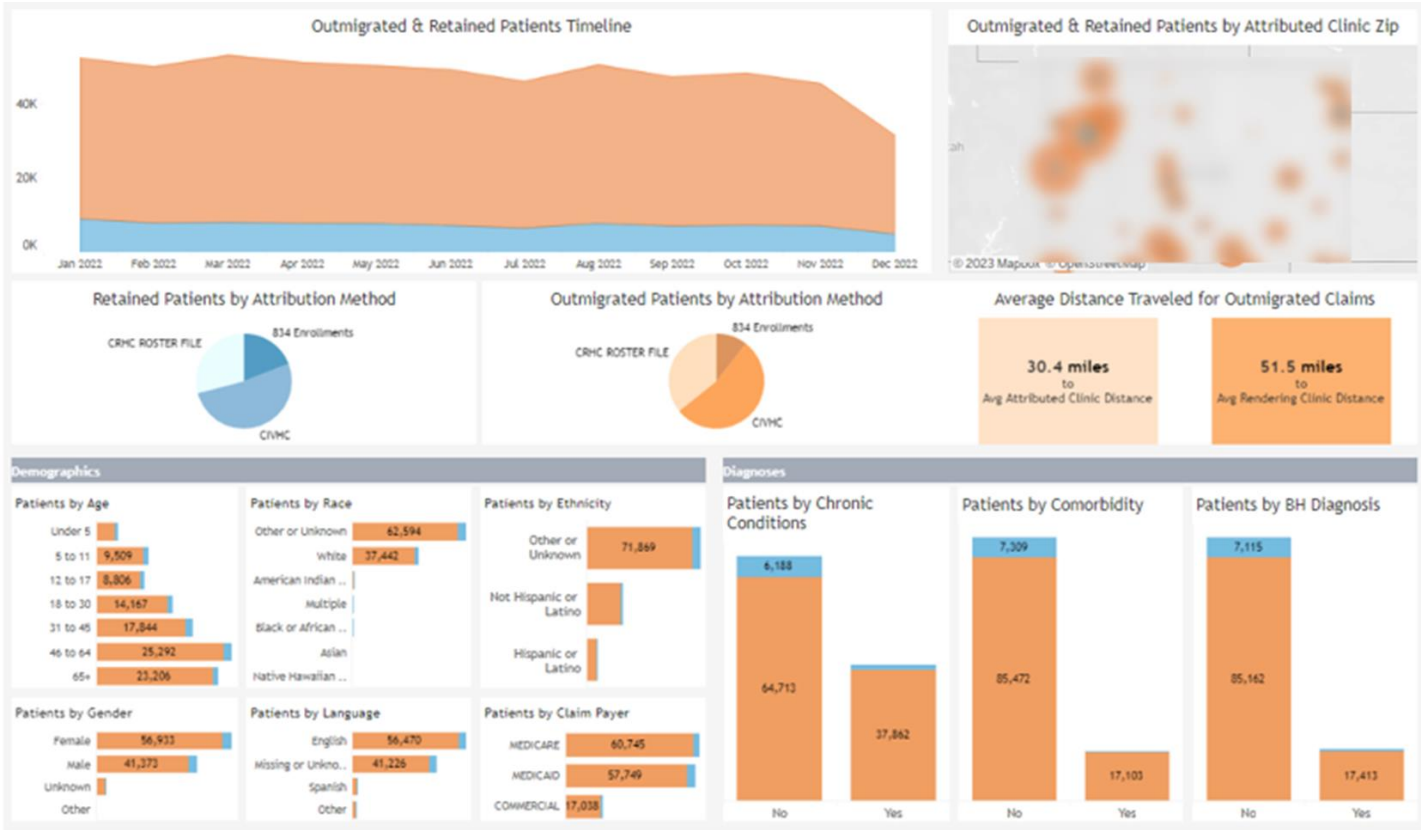
CCMCN strives to provide its end-users with the tools and resources to be able to understand and manage their attributed population. The Outmigration Report enables end-users with necessary data to easily identify outmigration visits.

## What is included in the Outmigration Report?

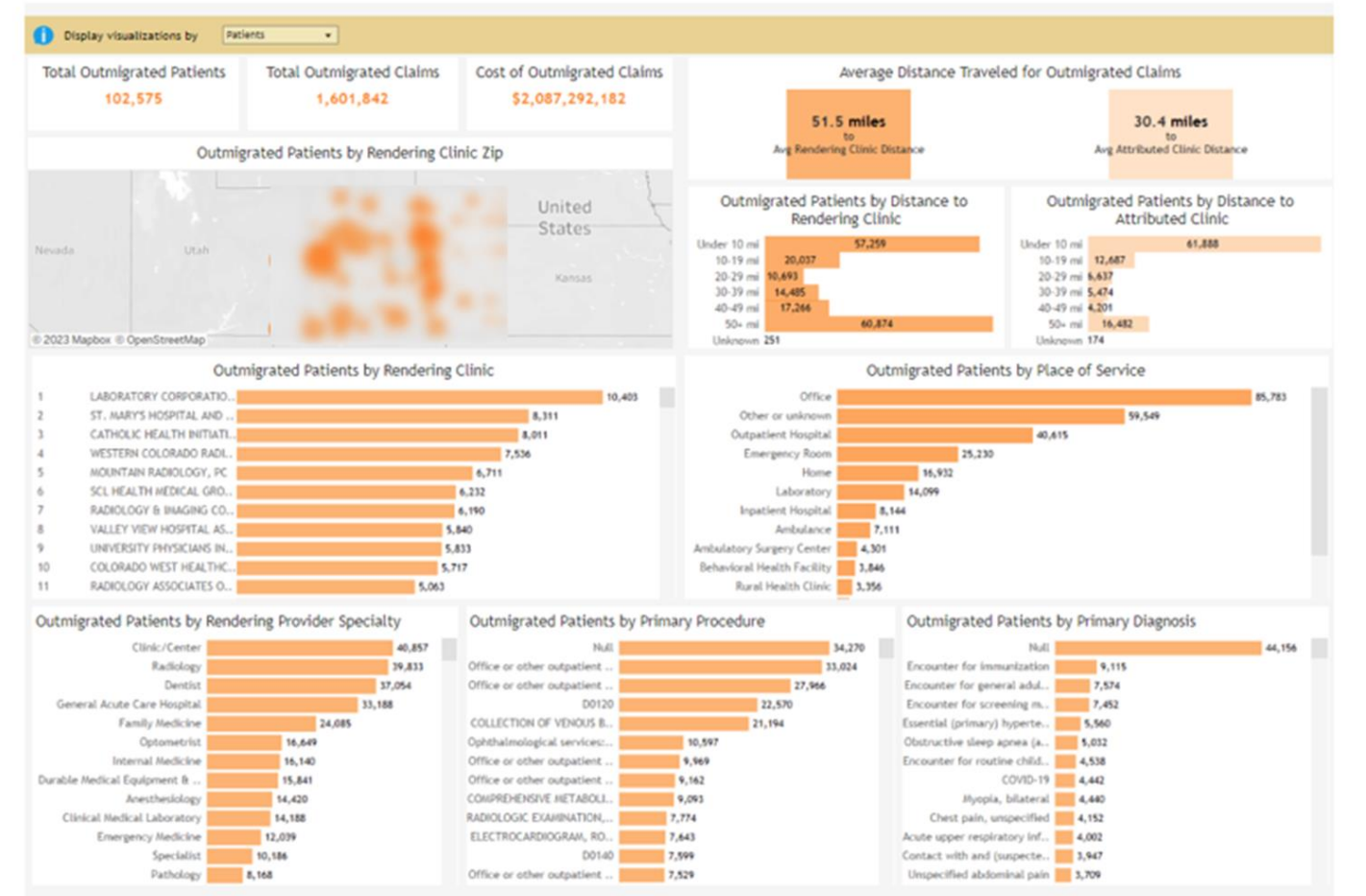
- Distribution of your attributed population that are retained or outmigration patients.
- Information on outmigration claims including rendering facility, place of service, primary procedure code, rendering specialty, and more.
- Social and Demographic information including age, race/ethnicity, gender identity, sex, payer, diagnosis history, and more.
- Cost of outmigration visits/claims.
- Distance traveled to attributed clinic vs. Rendering clinic.

1. Mosely D, et al. 2020 Rural Hospital Sustain, ability Index Trends in Rural Hospital Financial Viability, Community Essentiality, and Patient Outmigration. <https://guidehouse.com/-/media/www/site/insights/healthcare/2020/guidehouse-navigant-2020-rural-analysis.ashx>  
 2. Center for Healthcare Quality and Payment Reform. Retrieved September 28, 2023, from [https://chqpr.org/downloads/Rural\\_Hospitals\\_at\\_Risk\\_of\\_Closing.pdf](https://chqpr.org/downloads/Rural_Hospitals_at_Risk_of_Closing.pdf)

# Outmigration Report – Now Available








The “Outmigration Overview”, pictured above, showcases the distribution of outmigrated patients and retained patients. End-users can also view demographic factors, diagnosis history, and average distance traveled to the rendering clinic and attributed clinic.



The “Outmigration Clinic Analysis”, pictured above, showcases only outmigrated patients and visits/claims. End-users can view additional insights into their outmigrated population including rendering clinic, rendering provider specialty, primary procedure code, place of service, and more.

## Rural Health Today

Recent publications that contain rural health research & policy:

-  [Differences in Residential Stability by Rural/Urban Location and Socio-Demographic Characteristics](#)
-  [Colorectal Cancer Screening in Rural and Urban Primary Care Practices Amid Implementation of the Medicare Access and CHIP Reauthorization Act](#)
-  [Examining Rural-Urban Differences in the Availability of Hospital-Based Cardiac Services Between 2010-2020](#)
-  [Assessing Key Indicators of Rural versus Urban Water Quality](#)
-  [Perceptions of Access to Care After a Rural Hospital Closure in an Economically Distressed County of Appalachian Tennessee](#)

**Note:** CCMCN will be transitioning away from their current analytics vendor. This will cause a brief hiatus during Q1 of 2024 for the suite of canned claims analytics. All custom reporting will still be available during this time. CCMCN aims to provide its end users with the finest and most intuitive reports and analytics. We apologize for the interruption and appreciate your understanding during this time, as we search for the most outstanding vendor possible. If you have any questions, please contact Andy Woster at [andy@ccmcn.com](mailto:andy@ccmcn.com)

### Technical Assistance or Demo

If you are interested in receiving an in-depth demonstration of the CAP and all it has to offer or if you need technical assistance, please contact James Stephenson at [js@coruralhealth.org](mailto:js@coruralhealth.org) or Demetria Flowers at [demetria@ccmcn.com](mailto:demetria@ccmcn.com)

### Topics of Interest

Are you interested in learning more about a topic that has not yet been covered in the quarterly newsletter or CAP user group meeting? Submit any questions or topics to Demetria Flowers at [demetria@ccmcn.com](mailto:demetria@ccmcn.com)

### Demographic Files and Trading Partner Authorization

Want to view data for your organization in the CAP? To begin participating in the Rural Connectivity Project, please reach out to Jessica Whiting at [jessica.whiting@ccmcn.com](mailto:jessica.whiting@ccmcn.com) or James Stephenson at [js@coruralhealth.org](mailto:js@coruralhealth.org)