

COLORADO RURAL HEALTH CENTER'S RURAL CONNECTIVITY PROGRAM

CURRENT PARTICIPATION

151

Rural Organizations
currently eligible
for the Rural
Connectivity Project

102

Facilities
participating in
the Community
Analytics Platform
(CAP)

140

Facilities connected
to a Health
Information
Exchange (HIE)

COLORADO
RURAL HEALTH
CENTER

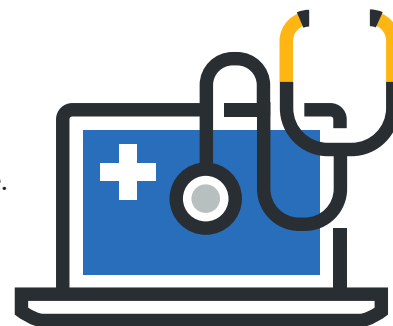
The State Office of Rural Health

6551 S Revere Parkway, Suite 155
Centennial, CO 80111
P: 303.832.7493

ruralconnect@coruralhealth.org
coruralhealth.org

Rural Connectivity Program

CRHC's Rural Connectivity Program is a program funded by the Office of eHealth Innovation, Department of Health Care Policy and Financing and in partnership with the Colorado Community Managed Care Network (CCMCN), and Contexture. The goals are to establish a sustainable model for rural connectivity, including connecting providers to Colorado's Health Information Exchanges (HIE) and supporting rural America's underserved rural population with analytics and data.



Incentivized, Sustainable Participation

Each August, eligible facilities that are participating in the Rural Connectivity Program receive sustainability payments. To qualify for payments, eligible facilities must be connected to one of the state's Health Information Exchanges (HIE), the Community Analytics Platform (CAP), and be fully participating in the Rural Connectivity Program.



99

**FACILITIES RECEIVED R7
PAYMENTS**

- 25 CAHs at \$100,000 each
- 44 RHCs at \$20,000 each
- Only CAHs and RHCs are currently eligible for R7 payments

Powerful Data Tools

CCMCN makes available a Community Analytics Platform (CAP) that provides a comprehensive suite of analytics to allow rural health providers to view population health metrics, costs of care, and operational opportunities. By accessing the analytics provided through the CAP, CRHC assists providers with initiatives that address developing programs, understanding costs, refining workflows, and population health strategies.



13

**COMMUNITY ANALYTICS
PLATFORM (CAP)
DASHBOARDS AVAILABLE**

- Diabetes Screening and Diagnoses
- Cancer Screenings and Diagnoses
- Cardiovascular Disease Screenings and Diagnoses
- Outmigration Overview
- OB Desert Report
- Medicaid Attribution and PHE Unwind
- Shared Populations Report
- ADT Summary
- Adult Immunizations
- Childhood Immunizations
- COVID-19 Patient Management
- COVID-19 Trends and Distributions
- COVID-19 Vaccination

**REACH OUT TO THE COLORADO RURAL HEALTH
CENTER TO GET INVOLVED!**