

Mountain West

SNAPSHOT OF RURAL HEALTH IN COLORADO

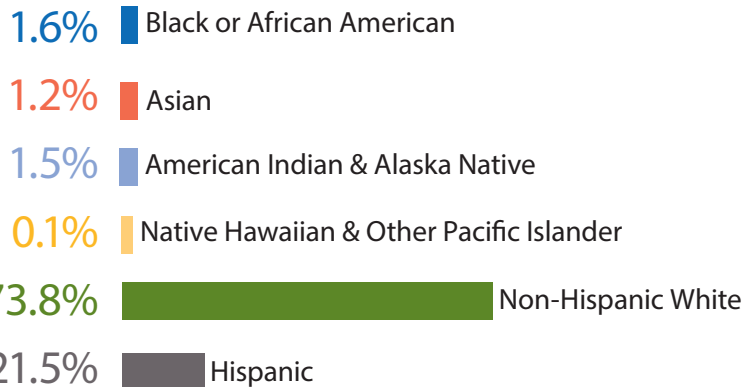
- 2024 -

 **COLORADO
RURAL HEALTH
CENTER**

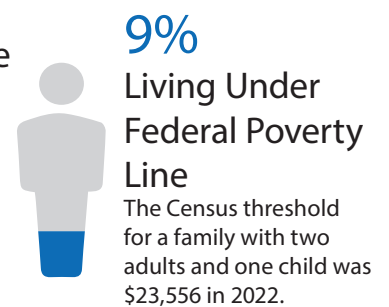
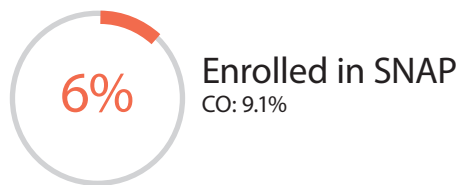
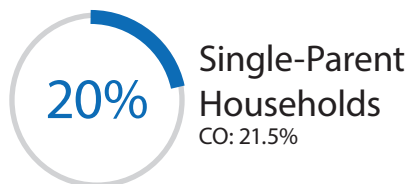
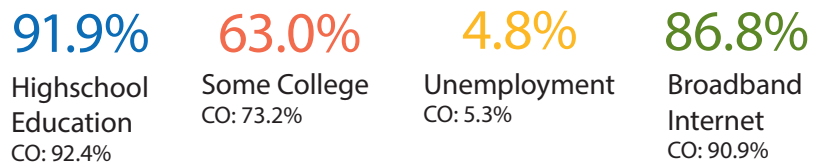
The State Office of Rural Health

Mountain West Region

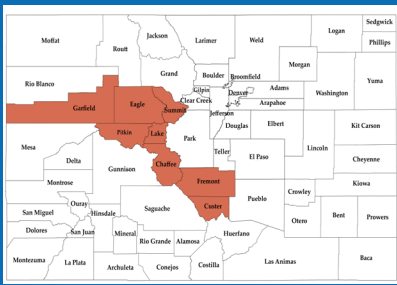
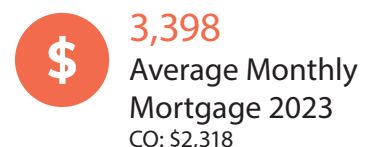
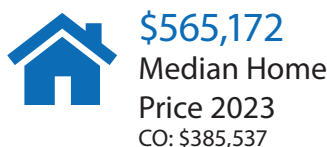
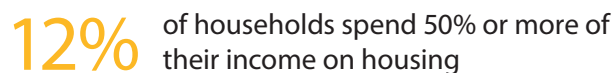
RACE AND ETHNICITY



SOCIAL DETERMINANTS OF HEALTH



HOUSING



8 counties

Chaffee, Custer, Eagle, Fremont, Garfield, Lake, Pitkin, Summit

249,000

The estimated population in 2023. This is 34.6% of total rural population.

44 Median Projected Age

85 Average life expectancy

19% of population that are < 18

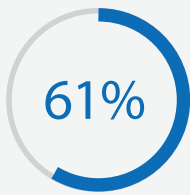
18% of population that are 65 +



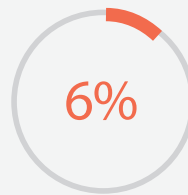
RURAL: A non-metropolitan county containing no municipalities over 50,000 residents.

FRONTIER: A county with a population density of 6 or fewer residents per square mile.

HEALTH OUTCOMES

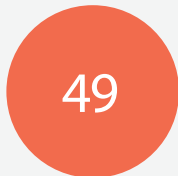


of adults were overweight or obese compared to 61% of Coloradans



of adults had adult diabetes compared to 8% of Coloradans

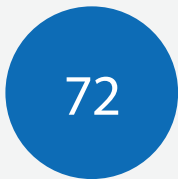
MENTAL AND BEHAVIORAL HEALTH



The number of unintentional drug related overdoses



11% of the population experienced poor mental health on 14+ days of past 30 days



The number of lives lost by suicide
78% among men
9% among veteran



405.0 per 1,000 population age-adjusted opioid perscriptions dispensed

PATIENT TO PROVIDER RATIO



Regional Physicians: 1,238:1
State Physicians: 1,204:1



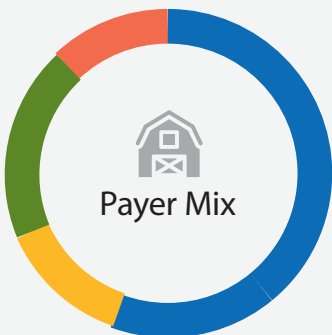
Regional Mental Health Providers: 295:1
State Mental Health: 234:1



Regional Dentists: 1,450:1
State Dentists: 1,183:1

610 Telehealth visits per 1,000 residents
32% of all payer telehealth visits were for behavioral health

ACCESS TO CARE



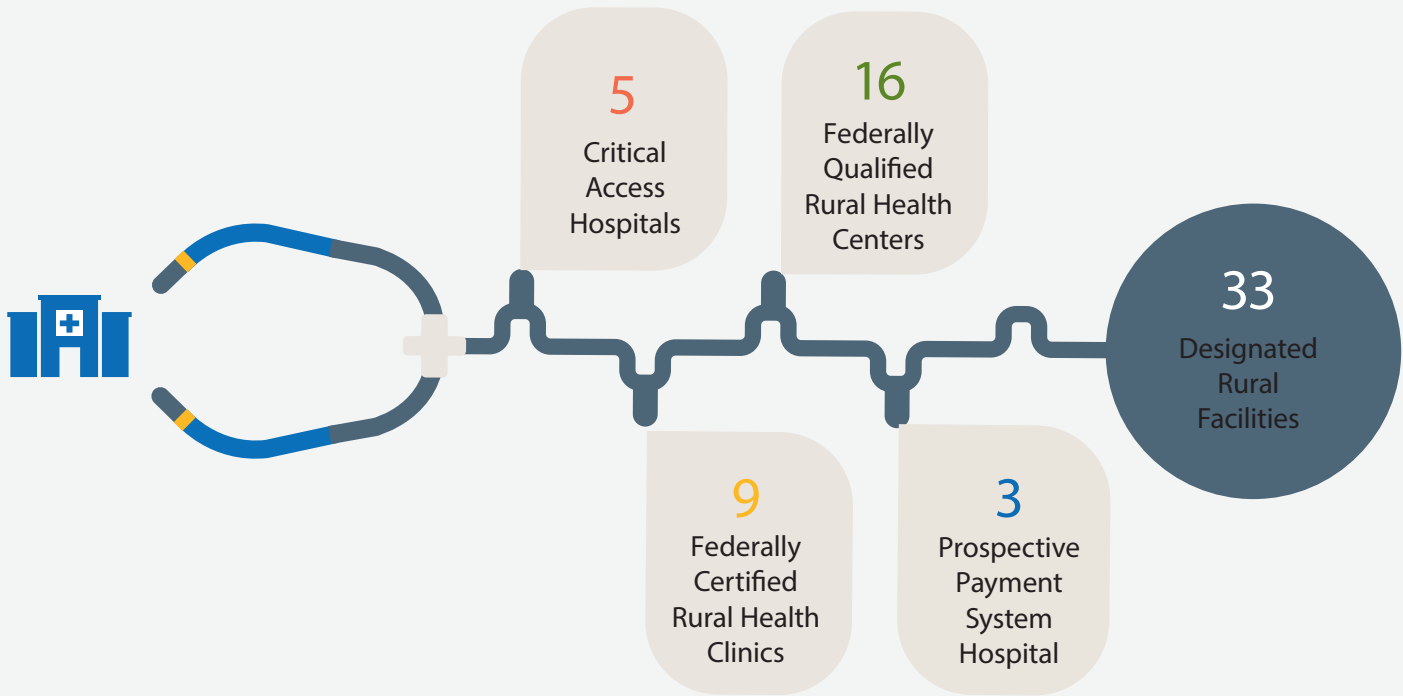
- 65.8% Private Payer
- 17.6% Medicaid alone/ or in combination
- 18.4% Medicare alone/ or in combination
- 11.3% Uninsured



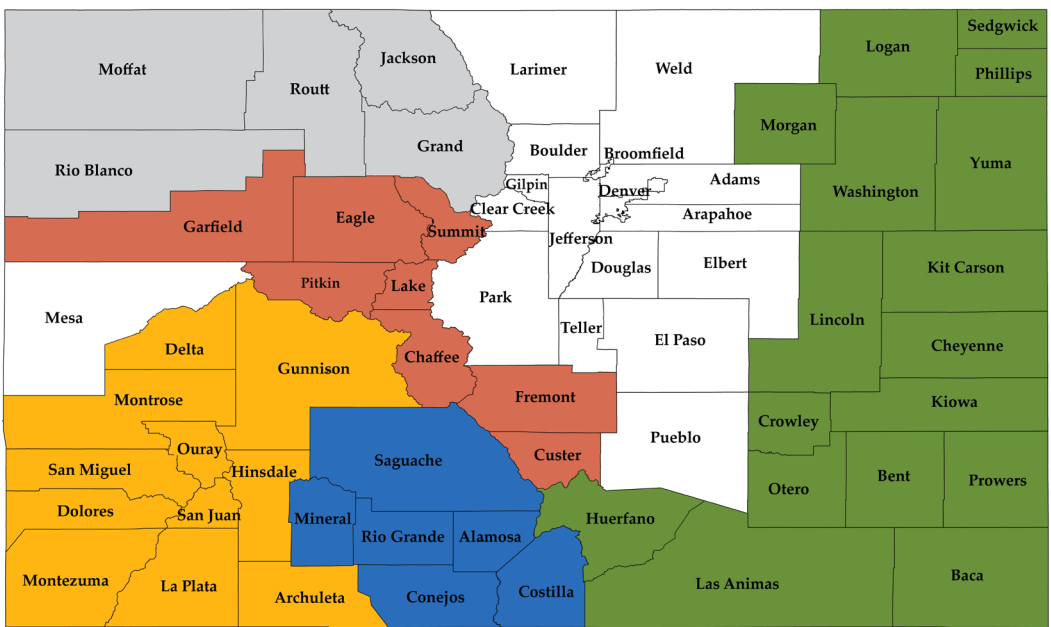
Percentage of female Medicare enrollees ages 65-74 that received an annual mammography screening

Average Years of Potential Life Lost: **5,264**

Designated Rural Facilities



REGIONS



Regions are grouped based on geographic and economic similarities

For a detailed list of Snapshot data sources, please visit coruralhealth.org

COLORADO RURAL HEALTH CENTER | *The State Office of Rural Health*

6551 South Revere Parkway, Suite 155 | Centennial, CO 80111 | P: 303.832.7493

web@coruralhealth.org | www.coruralhealth.org | FIND US ON

